

HUMAN SERVICES PATHWAY

Do you enjoy helping people? Can you work with a wide variety of personalities? Does psychology interest you? Would you like to make your community a better place and one where people would like to visit? Are you well organized? When you try to solve a problem, can you see the “big picture?” If you answered “yes” to any of these questions, then a career in Human Services might be right for you!

Career Cluster Areas

Education and Training
Government and Public Administration
Human Services
Law and Public Safety
Hospitality and Tourism

For more information on these Career Clusters, visit <https://www.pacareerzone.org/clusters>

Northwest PA

(Clarion, Crawford, Erie, Forest, Venango and Warren Counties)

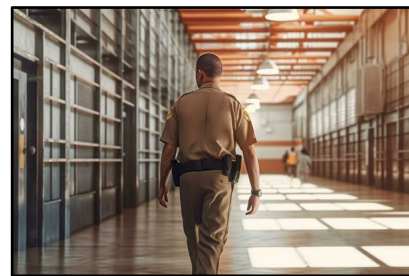
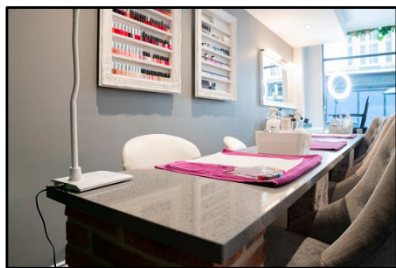
Select High Priority Jobs, Educational Attainment & Average Entry-Level Wages (2023)

Short- or Moderate Term OJT

Social & Human Service Assistants \$31,910
Correctional Officers & Jailers \$43,930
Police & Sheriff's Patrol Officers \$47,770

Bachelor's Degree

Substance Abuse, Behavior Disorder &
MH Counselors \$35,700
Child, Family & School Social Workers \$36,570
Middle School Teachers \$47,750
Secondary School Teachers \$50,170
Special Education Teachers, Kindergarten & Elem. \$50,210



Related Work Experience/ Post-Secondary/ Associate's Degree

Paralegals & Legal Assistants \$38,580
Hairdressers, Hairstylists & Cosmetologists \$19,080
Manicurists & Pedicurists \$18,360
Skincare Specialists \$29,830

Graduate Degree

Mental Health & Substance Abuse Social Workers \$34,890
Health Specialties Teachers, Postsecondary \$61,150*
Lawyers \$75,280*

*Not on NWPA High Priority Occupations List, but included on the statewide PA In-Demand Occupations List (PA IDOL)
For a list of Top 50 Employers by county, visit <http://bit.ly/Top50Emps>

HUMAN SERVICES PATHWAY

This Pathway includes careers addressing individual, family, and community needs.

Are you interested in...

Working with people
Government affairs
Aging adults
Child development
Family and social services
Food preparation
Teaching
Counseling
Law
Hospitality and tourism

Are you able to...

Organize well
Actively listen
Plan and direct programs
Be creative
Communicate well
Assume leadership roles
Work with a team
Be conscientious and dependable
Plan budgets

Do you enjoy...

Communicating
Helping and protecting others
Community service
Working with people
Counseling and advising people
Serving others' needs
Interviewing people
Handling customer complaints

If you answered "yes" to many of these questions, you might consider a future in one of the occupations listed on the front of this flyer, or below.

Additional PA In-Demand Occupations

Short-, Moderate-, or Long-Term OJT

Animal Caretakers
Childcare Workers
Food Preparation Workers
Janitors & Cleaners
Security Guards
Waiters & Waitresses
And more...

Related Work Experience / Post-Secondary / Associate's Degree

Preschool Teachers
Self-Enrichment Teachers
Supervisors – Food Prep & Serving Workers
Supervisors – Personal Service Workers
Teaching Assistants, Non-Postsecondary
Tutors
And more...

Bachelor's or Graduate Degree

Career/Technical Education Teachers
Child, Family & School Social Workers
Clergy
Directors, Religious Activities & Educ.
Elementary School Teachers
Nursing Instructors & Teachers, PS
And more...

Education / Training Resources

Adult Basic Education

Northwest Tri-County Intermediate Unit #5:
<https://www.iu5.org/community-services/adult-education>

Post-Secondary Education/Training Options

PA Eligible Training Provider List: <http://bit.ly/PACLETPL>
PA Colleges & Universities: <http://bit.ly/PACollegeandUniv>

To access the full *High Priority Occupations List* and the *PA IDOL* list, visit:
<https://www.nwpajobconnect.org/high-priority-occupations/>

To contact PA CareerLink® Erie County: 1-814-455-9966 (main); 1-814-871-4610 (TTY)
Auxiliary aids and services are available upon request to individuals with disabilities.
Equal Opportunity Employer / Program EO Officer Carrie Symes: 1-814-758-0659 or 711